



 5 bedrooms

 4 bathrooms

 Double Garage

 226.19 Sq M

VISTA 4 GRANNY FLAT

The property features everything you need for comfortable living. Interior spaces have been carefully planned to maximize living space, Whilst connecting seamlessly to the outdoors.

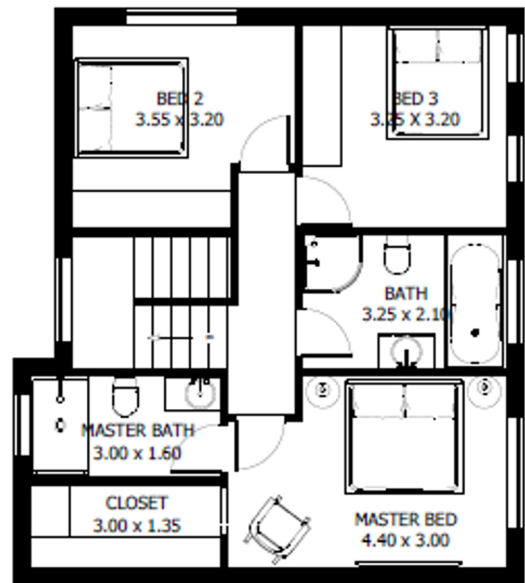
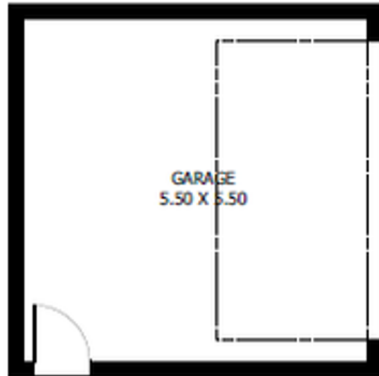


KEY FACTS

- ✓ Double storey
- ✓ 5 bedrooms
- ✓ 4 bathrooms
- ✓ Single Garage
- ✓ 226.19 Sq M
- ✓ Exterior width 8.00m
- ✓ Exterior length 26.78m

FLOOR AREAS

Ground Floor	120.00 sqm
First Floor	70.00 sqm
Alfresco	5.94 sqm
Garage	30.25 sqm
<hr/>	
Total Floor Area	226.19 sqm



First floor

